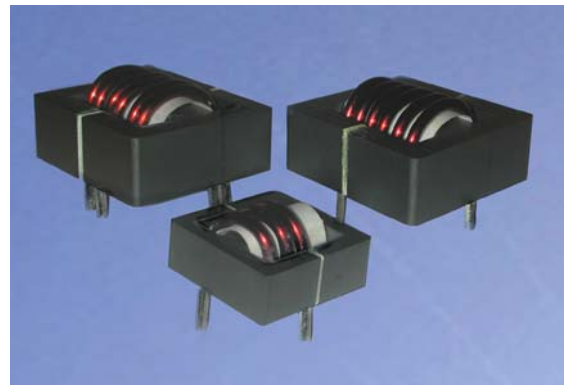




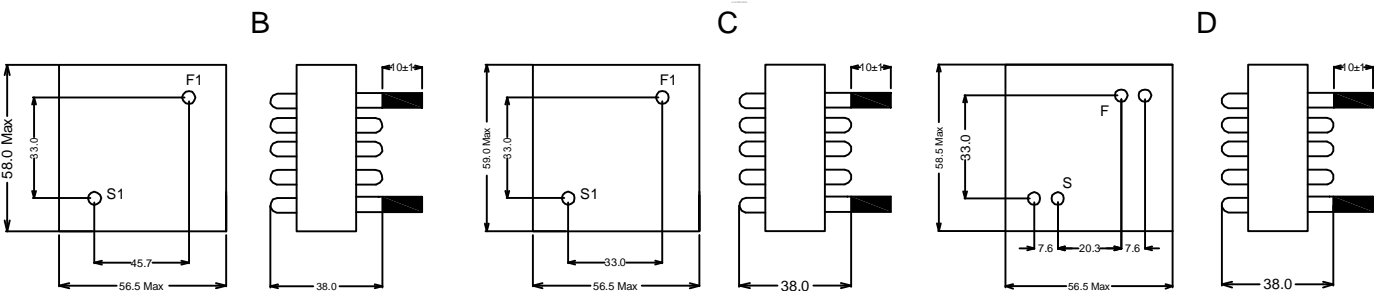
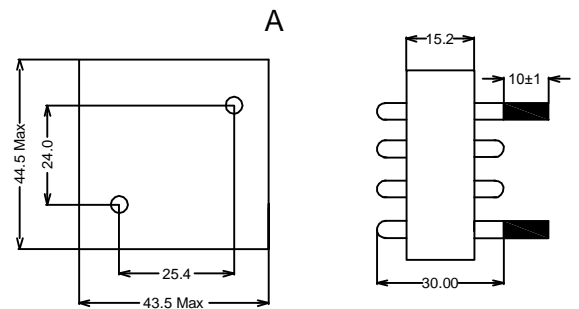
HC Series – High Current Inductors

Applications

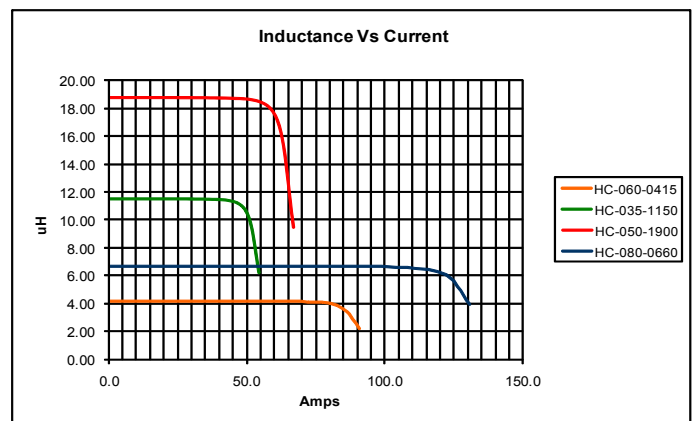
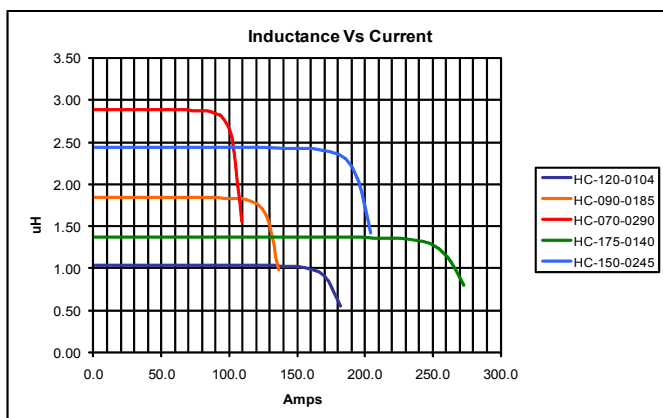
- Renewable energy, Battery chargers, Industrial converters



Electrical Specifications @ 25°C				
Part No	μH nominal +/-6%	Rdc mOhms typical	DC Current Amps max	Package
HC-035-1150	11.5	3.60	35	A
HC-050-1900	19.0	1.60	50	B
HC-060-0415	4.15	0.60	60	A
HC-070-0290	2.90	0.55	70	A
HC-080-0660	6.60	1.20	80	C
HC-090-0185	1.85	0.50	90	A
HC-120-0104	1.04	0.40	120	A
HC-150-0245	2.45	0.35	150	D
HC-175-0140	1.40	0.45	175	D



Dimensions : Millimeters
Tolerance : $\pm 0.50\text{mm}$ unless specified otherwise



Note: Typical inductance variation with current at 100°C operating temperature

